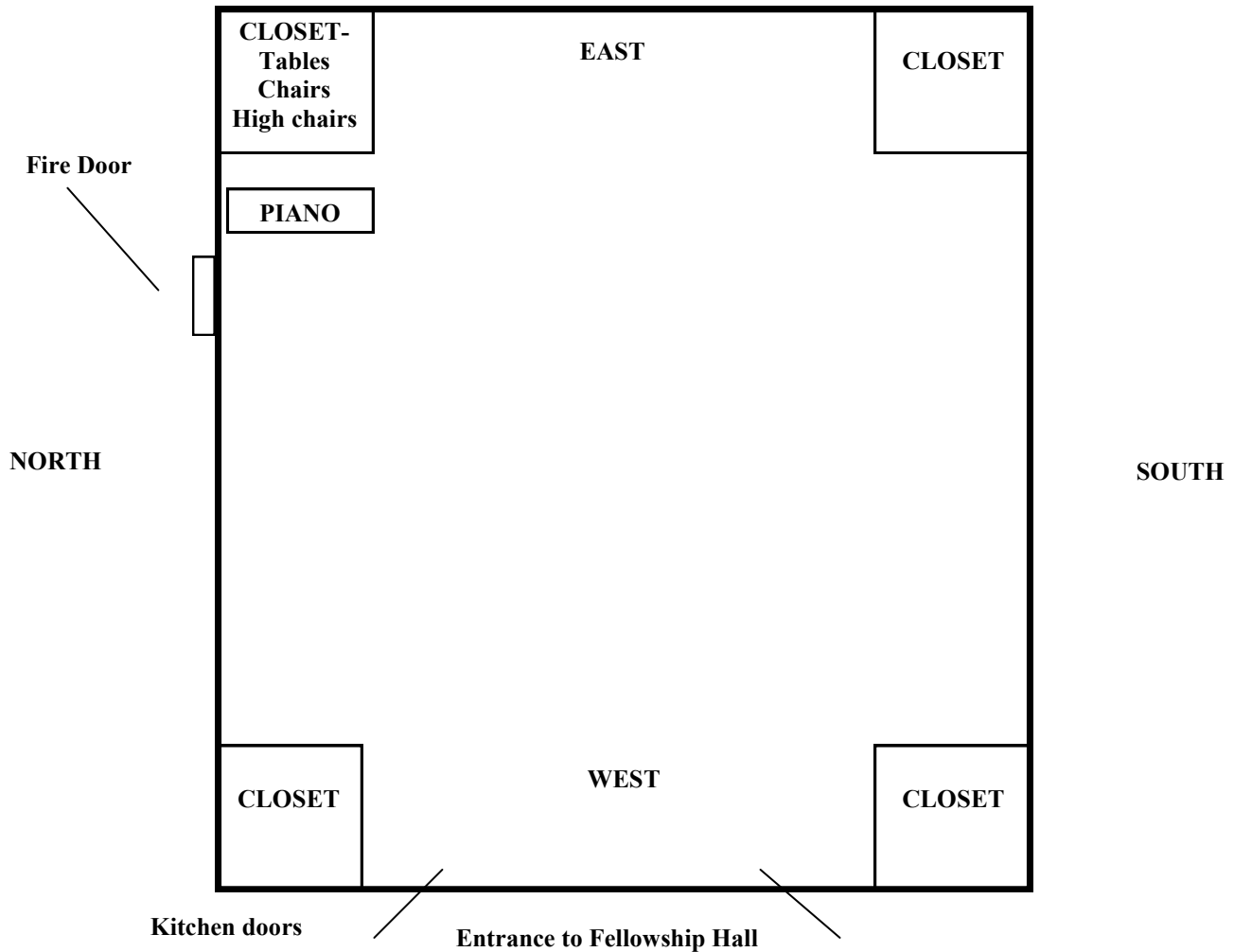


FELLOWSHIP HALL LAYOUT & INFORMATION

DRAWING NOT TO SCALE



- There are approximately 30 tables available for use. There are dishes available to serve approximately 200 people. If more than 150 people are being served, it is advisable to have two sittings. 150 is the ideal maximum number in the Fellowship Hall for a served meal.
- Small tables are 6 feet x 2 1/2 feet. If placed separately, 3 chairs on each side and one at each end you can sit 8 persons at each table. Large tables can hold up to 10 people. There are 12 to use.
- **Reminder: Please use only painter's tape on the walls. Do not use scotch tape on the walls.**
- Multiple heating and cooling thermostats are located on the walls with instructions.
- If you would like the sextons to set up for your event, please fill out form and leave detailed instructions. Thank you.
- ADDITIONAL INSTRUCTIONS: _____
